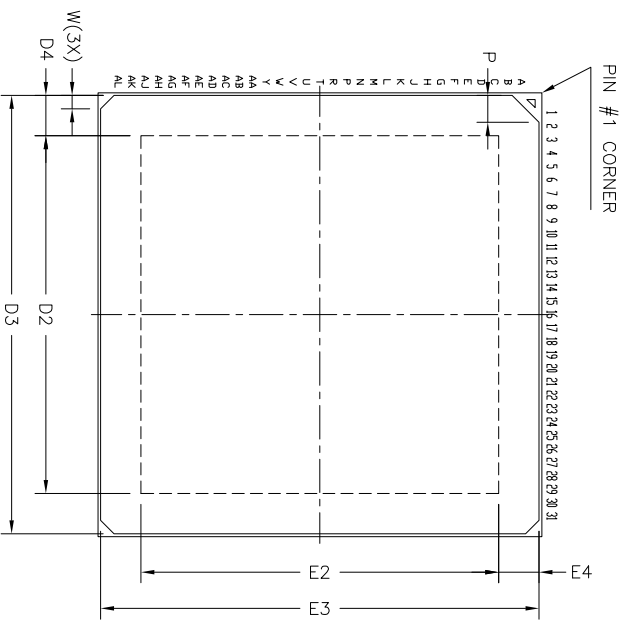
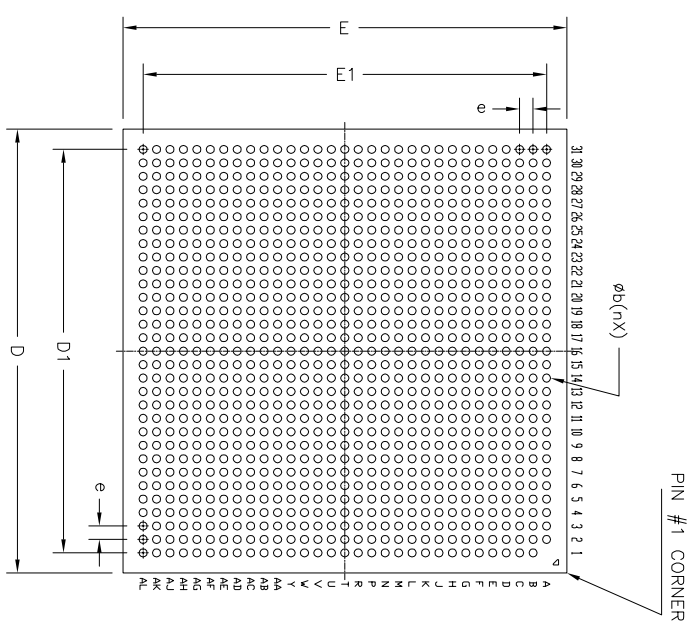


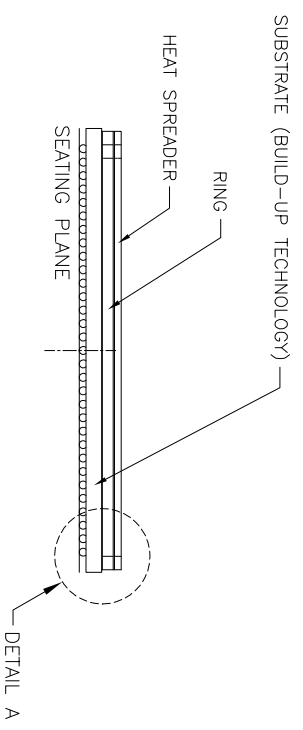
TOP VIEW



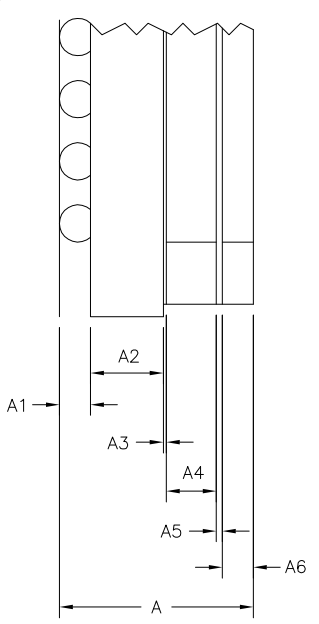
BOTTOM VIEW



SIDE VIEW




DETAIL A



REVISION HISTORY			
REV.	DISCRIPTION	DATE	APP'D
A	DRAWING ORIGINATION	03/24/11	PC

SYMBOLS	DIMENSIONS IN MM (Control Unit)			DIMENSIONS IN INCH (Reference Unit)		
	MIN	NOM	MAX	MIN	NOM	MAX
A	2.772	3.122	3.472	0.109	0.123	0.137
A1	0.400	—	0.600	0.016	—	0.024
A2	1.022	1.172	1.322	0.040	0.046	0.052
A3	—	0.050 REF	—	0.002 REF	—	—
A4	0.750	0.800	0.850	0.030	0.031	0.033
A5	—	0.100 REF	—	0.004 REF	—	—
A6	0.450	0.500	0.550	0.018	0.020	0.022
E	32.900	33.000	33.100	1.295	1.299	1.303
E1	—	30.000 BSC	—	—	1.181 BSC	—
E2	—	26.600 REF	—	—	1.047 REF	—
E3	32.550	32.600	32.650	1.281	1.283	1.285
E4	—	3.000 REF	—	—	0.118 REF	—
D	32.900	33.000	33.100	1.295	1.299	1.303
D1	—	30.000 BSC	—	—	1.181 BSC	—
D2	—	26.600 REF	—	—	1.047 REF	—
D3	32.550	32.600	32.650	1.281	1.283	1.285
D4	—	3.000 REF	—	—	0.118 REF	—
W	—	1.000X45° REF	—	—	0.039X45° REF	—
P	—	2.000X45° REF	—	—	0.079X45° REF	—
e	—	1.000 BSC	—	—	0.039 BSC	—
b	0.500	0.600	0.700	0.020	0.024	0.028
n	—	960	—	—	960	—



EXAR CORPORATION

960-BALL 33X33mm HFCBGA PACKAGE OUTLINE

Packaging Approval: _____

Drawing No.: 960-BALL 33X33mm HFCBGA

By: PC Date: 03/24/11 Revision: A Sheet: 1 OF 1