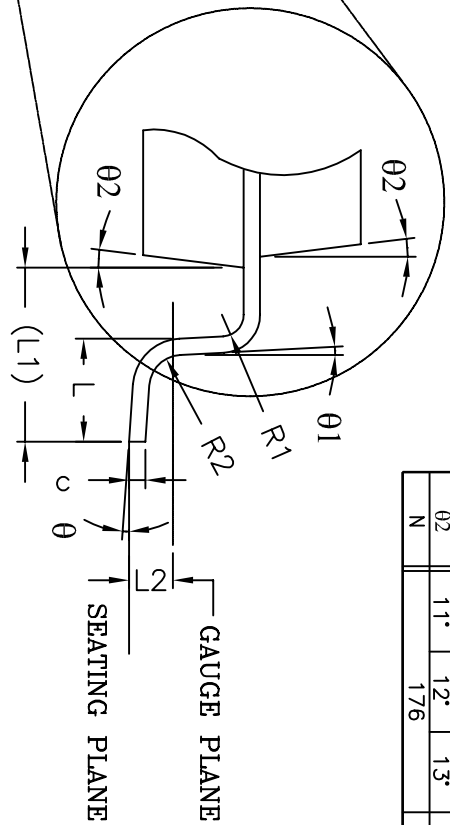
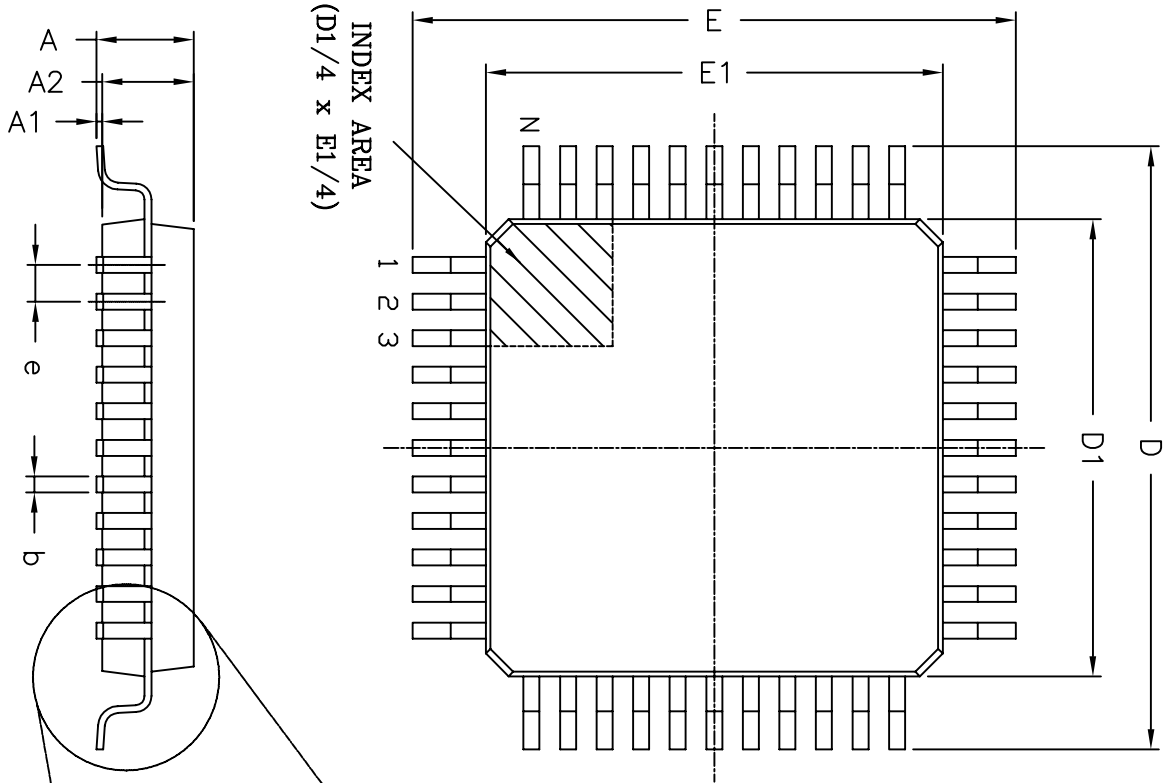



REVISION HISTORY

REV.	DISCRIPTION	DATE	APP'D
A	DRAWING ORIGINATION	02/11/09	PC

176 Pin LQFP JEDEC MS-026 Variation BGA						
SYMBOLS	DIMENSIONS IN MM (Control Unit)			DIMENSIONS IN INCH (Reference Unit)		
	MIN	NOM	MAX	MIN	NOM	MAX
A	—	—	1.60	—	—	0.063
A1	0.05	—	0.15	0.002	—	0.006
A2	1.35	1.40	1.45	0.053	0.055	0.057
b	0.17	0.22	0.27	0.007	0.009	0.011
c	0.09	—	0.20	0.004	—	0.008
D	—	26.00 BSC	—	—	1.024 BSC	—
D1	—	24.00 BSC	—	—	0.945 BSC	—
E	—	26.00 BSC	—	—	1.024 BSC	—
E1	—	24.00 BSC	—	—	0.945 BSC	—
e	—	0.50 BSC	—	—	0.020 BSC	—
L	0.45	0.60	0.75	0.018	0.024	0.030
L1	—	1.00 REF	—	—	0.039 REF	—
L2	—	0.25 BSC	—	—	0.010 BSC	—
R1	0.08	—	—	0.003	—	—
R2	0.08	—	0.20	0.003	—	0.008
θ	0°	3.5°	7°	0°	3.5°	7°
θ1	0°	—	—	0°	—	—
θ2	11°	12°	13°	11°	12°	13°
N	—	176	—	—	176	—



		EXAR CORPORATION	
Packaging Approval:		176 PIN LQFP PACKAGE OUTLINE	
By: PC	Date: 02/11/09	Drawing No:	176-PIN LQFP
		Revision: A	Sheet: 1 OF 1