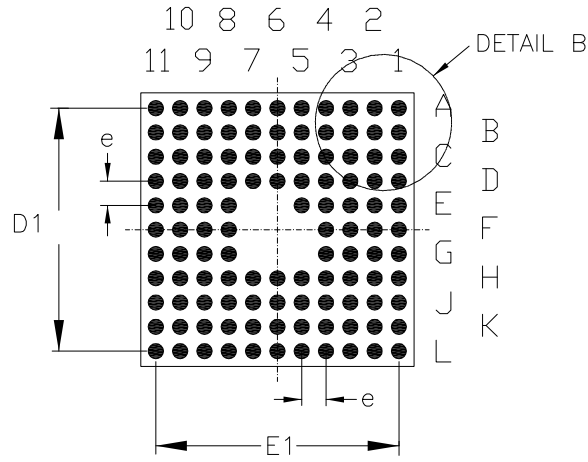
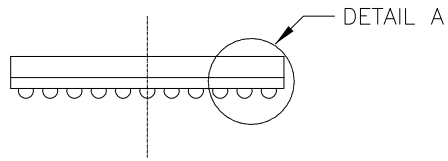


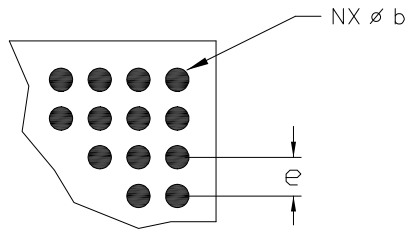
TOP VIEW



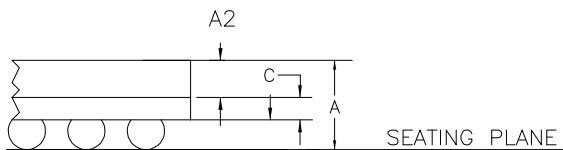
BOTTOM VIEW



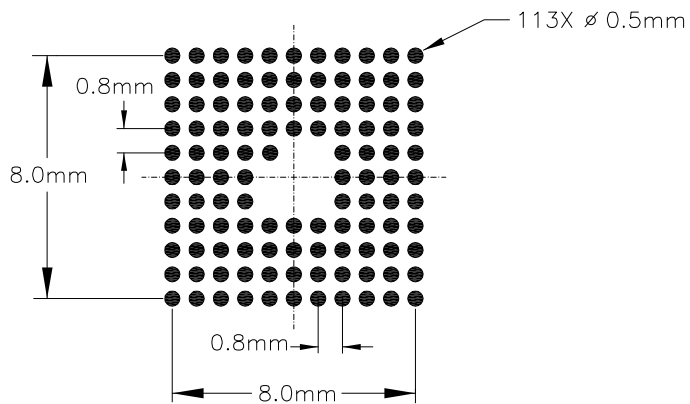
SIDE VIEW



DETAIL B



DETAIL A




RECOMMENDED PCB LAND PATTERN

| REVISION HISTORY |                         |          |                |
|------------------|-------------------------|----------|----------------|
| REV.             | DISCRIPTION             | DATE     | APP'D          |
| A                | DRAWING ORIGINATION     | 01/30/14 | PC             |
| B                | CORRECT LANDING PATTERN | 10/07/20 | ECN 2041-03 jh |

| 113-Ball 9X9mm L-fpBGA |                                    |      |      |  |       |       |
|------------------------|------------------------------------|------|------|--|-------|-------|
| SYMBOLS                | DIMENSIONS IN MM<br>(Control Unit) |      |      | DIMENSIONS IN INCH<br>(Reference Unit) |       |       |
|                        | MIN                                | NOM  | MAX  | MIN                                    | NOM   | MAX   |
| A                      | 1.23                               | 1.38 | 1.53 | 0.048                                  | 0.054 | 0.060 |
| A1                     | 0.28                               | 0.33 | 0.38 | 0.011                                  | 0.013 | 0.015 |
| A2                     | 0.65                               | 0.70 | 0.75 | 0.026                                  | 0.028 | 0.030 |
| C                      | 0.30                               | 0.35 | 0.40 | 0.012                                  | 0.014 | 0.016 |
| D                      | 9.00 BSC                           |      |      | 0.354 BSC                              |       |       |
| D1                     | 8.00 BSC                           |      |      | 0.315 BSC                              |       |       |
| E                      | 9.00 BSC                           |      |      | 0.354 BSC                              |       |       |
| E1                     | 8.00 BSC                           |      |      | 0.315 BSC                              |       |       |
| b                      | 0.45                               | 0.50 | 0.55 | 0.018                                  | 0.020 | 0.022 |
| e                      | 0.80 BSC                           |      |      | 0.031 BSC                              |       |       |
| M                      | 11                                 |      |      | 11                                     |       |       |
| N                      | 113                                |      |      | 113                                    |       |       |

NOTES: 'M' REPRESENTS THE BASIC BALL MATRIX SIZE.

|   |  |             |               |
|---|--|-------------|---------------|
|  | MAXLINEAR CORPORATION                  |             |               |
|   | 113-BALL 9X9mm L-fpBGA PACKAGE OUTLINE |             |               |
| Packaging Approval:   |  | Drawing No: | POD-0000056   |
| By: YG  | Date: 08/26/2020                       | Revision: B | Sheet: 1 OF 1 |

FOR REFERENCE ONLY